

DALI Touch Dimmer Switch

(SR-2300TR-RGBW)



- A. White & black plate are available
- B. DALI bus powered
- C. Start address from 00 to 64.
- D. Perfect for industry hall /warehouse / classrooms /single office /large office /meeting room / corridor

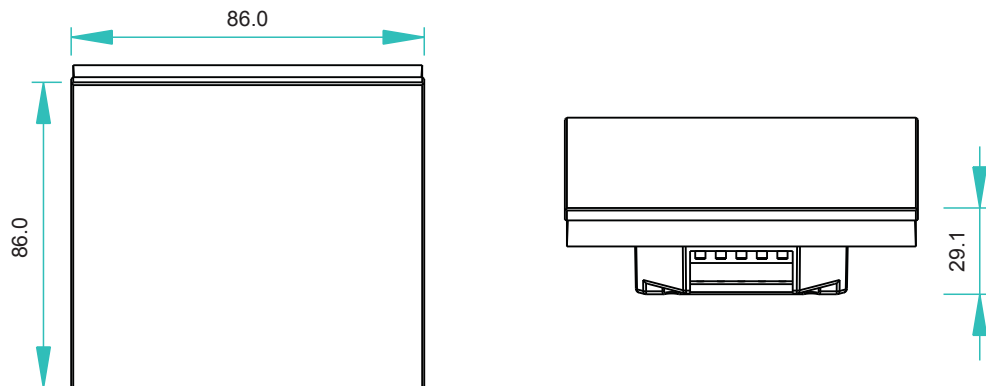
Feature

- Comply to DALI standard protocol IEC 62386-102, IEC 62386-207 and in compliance with DALI products from other international incorporation.
- Touch interface operation design, easy to use.
- With bus detective function, one channel DALI bus can install multiple dimmer switches.
- External power supply.
- Enable to select different single light zone by encoding switch. Up to 4 light zones for switch and dimming control. Each zone can be 4 DALI addresses.
- Can save 2 or 3 scenes.
- Suitable for RGB & RGBW LED.
- Built-in 10 color sequences

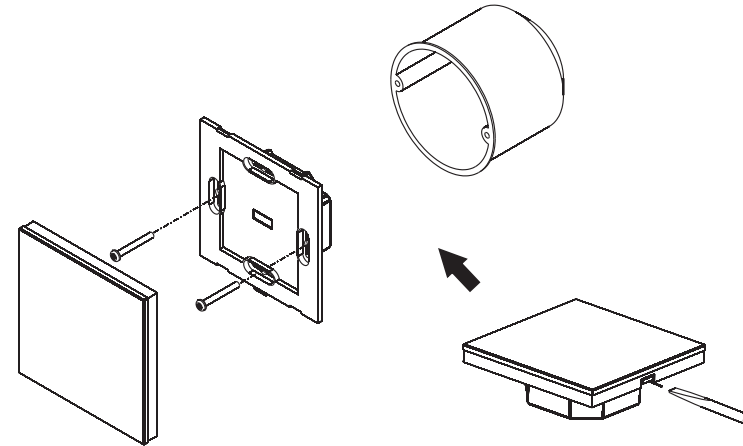
Parameter

Part No.	Operation Voltage	Output	Dimensions
SR-2300TR-RGBW	12-24VDC	DALI Signal	86x86x29.1

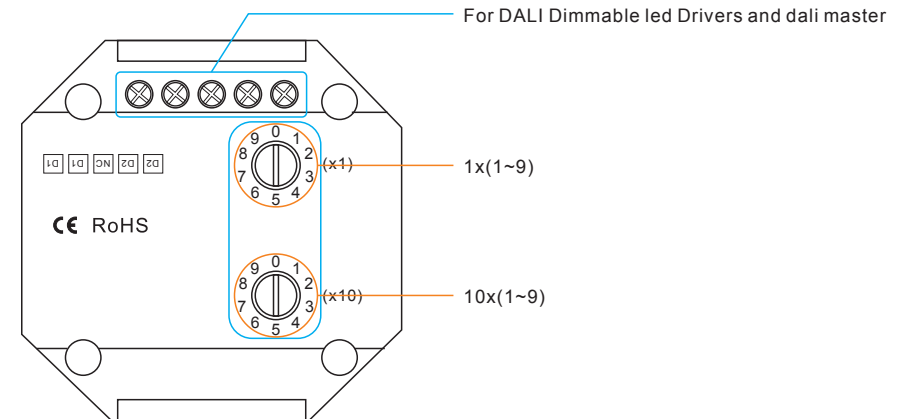
Product Size



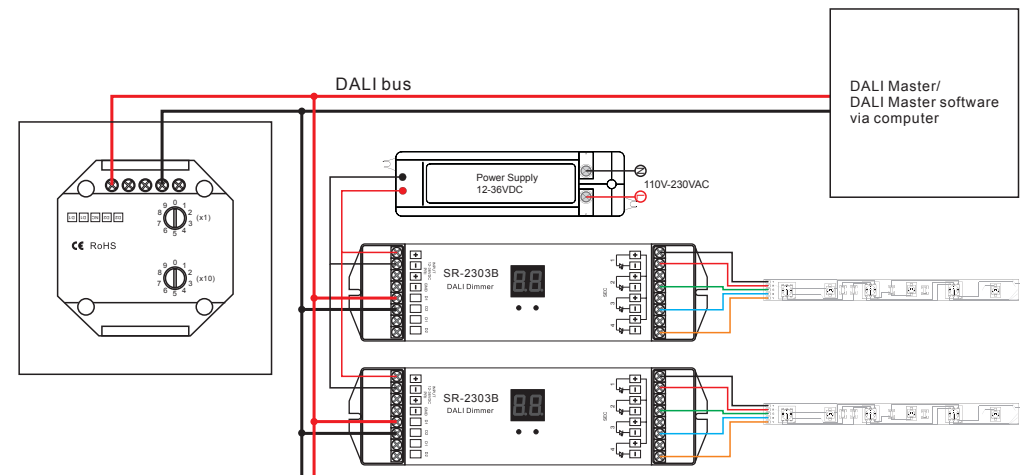
Installation



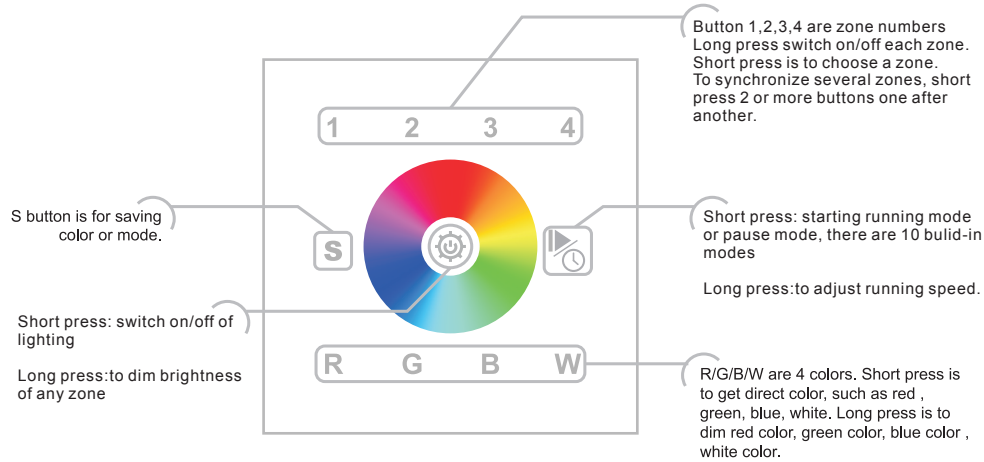
Brief introduction of buttons



Wiring diagram



Description of buttons



Operation

Set starting number for DALI switch

Set the starting number "X" on SR-2300TR-RGBW (with 64 dali address)

Z1 control X, X+1, X+2, X+3 dali address ,

Z2 control X+4, X+5, X+6, X+7 dali adrees ,

Z3 control X+8, X+9, X+10, X+11 DALi address ,

Z4 control X+12, X+13, X+14, X+15 DALi Address

Safety & Warnings

- 1) The product shall be installed and serviced by a qualified person.
- 2) IP20. Please avoid the sun and rain. When installed outdoors, please ensure it is mounted in a water proof enclosure.
- 3) Always be sure to mount this unit in an area with proper ventilation to avoid overheating.
- 4) Please check if the output voltage of any LED power supplies used comply with the working voltage of the product.
- 5) Never connect any cables while power is on and always assure correct connections to avoid short circuits before switching on.
- 6) Please ensure that the cable is secured tightly in the connector
- 7) For update information please consult your supplier.

Warranty Agreement

- 1) We provide lifelong technical assistance with this product:
 - 5-year warranty. We print date on every products, for example :1125 means year 2011, week 25. The warranty is for free repair or replacement and covers manufacturing faults only.
 - For faults beyond the 5-year warranty we reserve the right to charge for time and parts.
- 2) Limited Warranty
 - Any defects caused by wrong operation.
 - Any damages caused by unauthorized removal, maintenance, modifying, incorrect connection and replacement of chips.
 - Any damages due to transportation, vibration etc. after purchase.
 - Any damages caused by earthquake, fire, lightning, pollution and abnormal voltage.
 - Any damages caused by negligence, inappropriate storing at high temperatures and humidity or near harmful chemicals.
 - Product has been updated
- 3) Repair or replacement as provided under this warranty is the exclusive remedy to the customer.